



**Dear Diver,**

### **OPEN WATER REFERRAL COURSE**

Many thanks for signing up for your PADI Open Water course with us. You are one step closer to joining an exclusive group of people who can explore the underwater world. Once qualified you will be able to dive anywhere around the world to 18m.

**\*\*IMPORTANT, PLEASE READ\*\***

### **Before You Come**

Please complete the following before your session:

1. Download the PADI App and register for a PADI account.
2. Download, print, and complete the following forms:

[Medical questionnaire](#)

[Liability Release Form](#)

[Safe Diving Practices Form](#)

**Medical Questionnaire:** If you answer 'Yes' to questions **3, 5, or 10** on page 1, or to any questions on page 2 of the medical statement, you will need a signed note from your doctor confirming you are fit to dive. Without this note, your instructor is not allowed to let you to dive. If you answer 'No' to all questions, then no GP note is required.

You can find the details of some [Dive Medics here](#).

### **Course Structure**

**There are three parts to completing your course:**

#### **1. Theory (eLearning)**

You will receive your **PADI Open Water Digital eLearning** by email directly from PADI within 48 hours of signing up (please check your



**'Oyster Diving' is the trading name of:  
Oyster Luxury Travel and Diving Ltd**

Registered office: 1-2 Harbour House, Harbour Way, Shoreham-by-Sea, W. Sussex BN43 5HZ  
T: 0800 699 0243 F: 01273 384971 E: [info@oysterdiving.com](mailto:info@oysterdiving.com) [www.oysterdiving.com](http://www.oysterdiving.com)  
Registered in England number: 5747422. VAT Number 113 6200 68





junk/spam folder before contacting us). Once received, register using your email address. Each diver must have their own account.

Please upload a photo of yourself during registration — this is required for certification.

The eLearning can be completed on a PC, Mac, or tablet. If using a tablet, an internet connection is required to submit scores. Phones can be used, but the small screen makes this less practical and is not recommended.

Please complete all sections **before** your pool session. Be aware the theory can take up to 12 hours in total, but it can be split into multiple sessions — don't leave it until the last minute.

Bring a copy of your **eRecord** to the pool session and hand it to your instructor (this contains all your scores).

If you don't have a printer, [e-mail](#) it to us in advance and we can print it out for you.

If you have any technical difficulties then PADI customer services will be glad to assist, you can call them on 0117 300 7234.

If you need assistance on redeeming your online learning then [checkout our guide](#).

## 2. Pool dives (part A)

**Address:** Prince Regent Swimming Complex, Church St, Brighton BN1 1YA

### **Timings:**

10:00 to 10:15 – Registration at the reception with an Oyster Instructor  
10:15 to 11:00 – Pool side briefing and equipment set up. (Swim tests)  
11:00 to 15:00 – In-water training with a small break  
15:00 to 15:30 – Logbook completion with the instructor

### **Parking:**

Parking at Prince Regent is limited to a maximum of 2 hours. If driving, we recommend using the nearby NCP car park

### **Rebooking Fees:**

- 3–6 working days' notice: £30 rebooking fee
- Less than 2 working days' notice: £70 rebooking fee  
(*This is due to instructor scheduling and limited course capacity*)



The pool session will show you how to set up your equipment, how to use it and how to become a proficient diver.

### **What to Bring to the Pool:**

- Completed PADI forms
- eLearning scores (eRecord)
- Swimwear and towel
- Any personal diving equipment you own (we provide all required kit)
- Bottle of water (diving can make you thirsty)

Contact lenses can be worn inside your mask, just keep your eyes closed during mask-removal skills. [Masks with prescription lenses](#) are available at an additional cost. Please contact us for details.

### **3. Open Water Dives (Part B)**

If you've booked the full course with us, you'll receive a second booking confirmation by email with separate details for your open water dives.

#### **Referral Students Only**

(Theory & pool completed with us; training dives completed abroad)

- Completion dives (Part B) can be done at any PADI dive centre worldwide
- Must be completed within **12 months** of your pool session
- We recommend completing them within **2–3 months** to keep your skills fresh

Your instructor will complete a **referral form** inside your logbook at the end of the pool session.

**Do not lose this form.** It is not stored online, and a £25 admin fee applies if we need to recreate and email a replacement.

If you would like to complete your course in the UK with Oyster. Please give us a call at 0800 699 0243 or e-mail [info@oysterdiving.com](mailto:info@oysterdiving.com). Alternatively, our [Travel Centre](#) would be glad to provide you with a quote for a holiday or short break where you can complete your course.

If you haven't done so already, we do recommend purchasing a mask, snorkel, boots, and fins. These are available through our [dive shop](#) and can be delivered to your address or any pool or lake session.

We receive many questions about "should I own my own equipment" so to make it easy we have written a [short blog to help you](#).



If you are interested in hearing about any trips we are running, or special offers please like our [Facebook page](#).

Thanks again for booking your course with us and we look forward to seeing you soon and starting your underwater adventure.

**See you soon,  
The Team at Oyster Diving**

The UK's premier PADI Diving and Travel Centre

T: 0800 699 0243

E: [info@oysterdiving.com](mailto:info@oysterdiving.com)

[www.oysterdiving.com](http://www.oysterdiving.com)

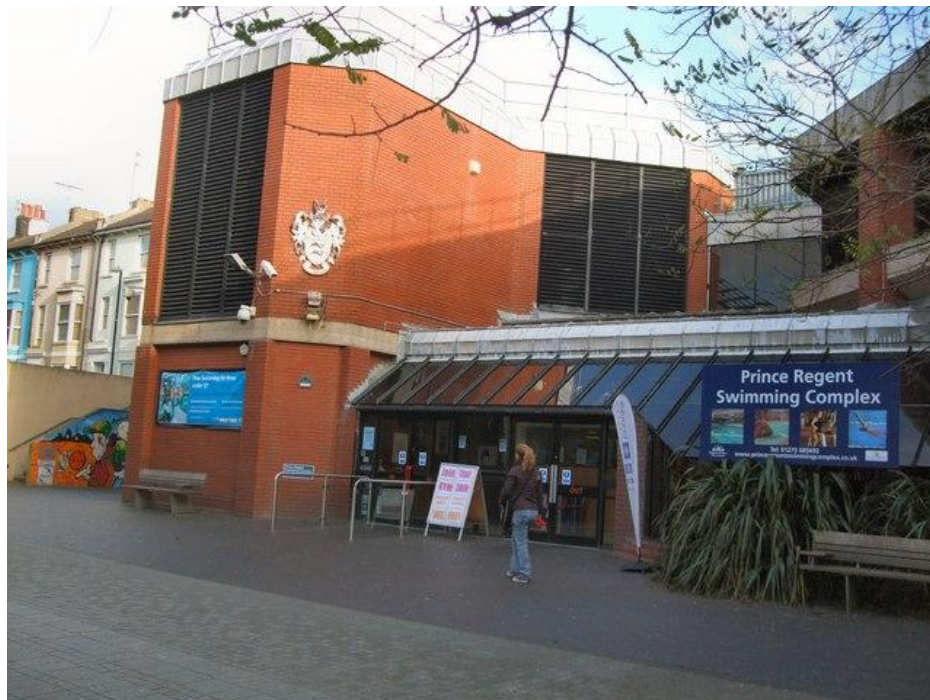
[www.oysterdivingshop.com](http://www.oysterdivingshop.com)



### Brighton Pool Directions

**Address:** Prince Regent Swimming Pool, Church St, Brighton BN1 1YA.

The Prince Regent pool can be found in central Brighton close to the Pavilion. There are lots of shops, cafes, restaurants and bars within a stones throw away.



You can find a [map here](#).



There is 2 hours of free parking on site but we recommend that you park at a nearby NCP car park just in case your course runs over.

Remember to bring your swimwear, change of clothes, your e-learning certificate and a bottle of water.

You will also need a small padlock for the lockers in the changing room. These can be purchased from reception on arrival for a fee.